

International Investor

Issue No. 112

www.stockmarket.co.nz

April 12, 2005

Inside International Investor

United States stockmarket outlook 2, 8 Investment Fund Survey 4, 5, 6, 7

Editor and Research Director: James R Cornell (B.Com.)

World Stockmarket Forecasts

Stockmarket	One-Year Forecast	Fundamental Indicators	Technical Indicators	Monetary Indicators	Economic Indicators	Historical Performance (in US\$)			Share Index
						3 mths	6 mths	12 mths	
Australia	62%	Bullish	Bullish	Bearish	Bullish	+3.6%	+17.5%	+21.1%	4,148.50
Austria	61%	Bearish	Bullish	Bullish	Bearish	+7.9%	+32.5%	+46.3%	2,711.11
Belgium	63%	Neutral	Bullish	Bullish	Neutral	+4.4%	+19.3%	+36.8%	3,182.23
Canada	53%	Neutral	Bullish	Neutral	Bearish	+7.2%	+11.1%	+17.7%	9,623.72
Denmark	69%	Bearish	Bullish	Bullish	Bullish	+11.4%	+20.7%	+32.4%	329.95
Finland	78%	Bullish	Bullish	Bullish	Neutral	+4.3%	+16.2%	+13.4%	6,664.51
France	67%	Bullish	Bullish	Bullish	Bearish	+5.3%	+15.7%	+18.3%	2,855.60
Germany	53%	Bearish	Bullish	Neutral	Neutral	+0.4%	+13.4%	+16.4%	4,400.68
Ireland	66%	Neutral	Bullish	Bullish	Bullish	-5.0%	+13.1%	+21.5%	6,149.61
Italy	68%	Neutral	Bullish	Neutral	Bullish	+3.7%	+20.1%	+27.2%	25,064.00
Japan	63%	Bearish	Bullish	Bullish	Neutral	+0.2%	+5.7%	-2.7%	11,874.75
Netherlands	64%	Bullish	Bullish	Neutral	Neutral	+3.8%	+15.4%	+13.0%	373.61
New Zealand	42%	Bullish	Neutral	Bearish	Bearish	-2.6%	+8.2%	+22.2%	2,336.05
Norway	78%	Bearish	Bullish	Bullish	Bearish	+10.3%	+19.5%	+35.5%	914.17
Spain	64%	Neutral	Bullish	Bullish	Bullish	+3.6%	+18.7%	+22.2%	1,008.62
Sweden	57%	Bearish	Bullish	Neutral	Neutral	+4.0%	+15.2%	+19.8%	246.67
Switzerland	53%	Bearish	Bullish	Neutral	Neutral	+3.3%	+13.2%	+10.3%	6,016.57
Un. Kingdom	54%	Bullish	Bullish	Neutral	Bearish	+3.1%	+10.8%	+13.4%	4,983.60
USA	50%	Neutral	Neutral	Neutral	Bearish	-0.4%	+5.3%	+3.7%	1,181.20
Argentina	67%	Bearish	Bullish	Bullish	Bearish	+17.6%	+21.5%	+20.0%	3,383.66
Brazil	58%	Bullish	Bullish	Neutral	Bearish	+9.4%	+17.4%	+26.0%	25,884.63
Czech Rep.	76%	Neutral	Bullish	Bullish	Bullish	+11.1%	+46.2%	+61.8%	1,191.70
Chile	49%	Neutral	Bullish	Bearish	Bearish	+6.4%	+13.2%	+30.1%	9,439.52
China	47%	Bearish	Bearish	Bullish	Neutral	+6.0%	-12.1%	-29.0%	83.24
Greece	73%	Bearish	Bullish	Bullish	Neutral	+3.5%	+28.6%	+29.6%	2,993.98
Egypt	49%	Bearish	Bullish	Bearish	Bullish	+31.8%	+61.4%	+92.3%	1,623.28
Hong Kong	39%	Neutral	Neutral	Bearish	Bearish	+0.6%	+3.1%	+5.8%	13,666.72
Hungary	85%	Bearish	Bullish	Bullish	Bullish	+17.8%	+39.1%	+63.7%	17,458.16
India	40%	Neutral	Bullish	Bearish	Neutral	+0.7%	+17.2%	+10.6%	6,479.54
Indonesia	63%	Bullish	Bullish	Neutral	Bearish	+5.2%	+24.3%	+28.8%	1,111.23
Israel	57%	Bearish	Bullish	Bullish	Bearish	+5.4%	+20.4%	+19.5%	672.76
Korea	83%	Bearish	Bullish	Bullish	Bullish	+18.0%	+27.4%	+23.5%	992.17
Malaysia	47%	Bullish	Bearish	Neutral	Neutral	-5.7%	+0.3%	-2.2%	864.02
Mexico	55%	Neutral	Bullish	Bullish	Bearish	+2.5%	+15.5%	+16.8%	12,531.63
Philippines	65%	Bearish	Bullish	Bullish	Bearish	+5.9%	+7.1%	+29.2%	1,906.69
Poland	68%	Bearish	Bullish	Bullish	Neutral	+3.4%	+17.3%	+35.5%	27,335.08
Portugal	58%	Neutral	Bullish	Bullish	Neutral	-0.1%	+9.8%	+14.5%	2,309.38
Russia	68%	Bearish	Bullish	Bullish	Neutral	+11.5%	+0.2%	-5.9%	8,498.97
Singapore	62%	Bullish	Bullish	Neutral	Neutral	+4.1%	+10.4%	+16.1%	2,181.94
Sth Africa	68%	Neutral	Bullish	Bullish	Bearish	+3.1%	+16.2%	+25.5%	13,312.88
Taiwan	57%	Bullish	Bullish	Neutral	Neutral	+2.8%	+5.3%	-5.3%	6,024.07
Thailand	62%	Bullish	Neutral	Bullish	Bullish	-3.5%	+5.0%	-2.7%	683.76
Turkey	64%	Bearish	Bullish	Bullish	Bearish	+5.1%	+24.2%	+31.2%	25,786.45
Venezuela	49%	Neutral	Bearish	Bullish	Bearish	-9.2%	-19.9%	+10.4%	27,756.26

One Year Forecasts predict the probability that a stock-market will rise over the next year. Investors should seek to invest in markets with forecasts of 60-100%, while avoiding markets with forecasts of 0-40%. Bullish = Favourable. Bearish = Unfavourable.

United States Stockmarket Outlook

Our current One-Year Forecast for the United States stockmarket is Neutral at 50%. A major decline from this point appears unlikely, and while the market may not appreciate strongly in value the most probable outcome is for further steady growth over the coming years.

The US stockmarket has generally trended upwards over the last 2-2½ years . . .



. . . and while there have been a couple of corrections during 2005 the overall trend is still upwards - although this trend is probably best rated as Neutral.

The stockmarket became very over-valued in the 1990's boom but has now returned to *fair* value - which is again Neutral for the market's *long term* future performance. The average Price/Earnings ratio is around 19 . . .



. . . and the average Dividend Yield about 1.8%.



Monetary indicators - which can have an important impact on the market's *short term* trend are also rated Neutral overall.

Short term interest rates - which are widely reported in the media - have risen over the last year . . .



. . . but off the unusually low levels that followed the recent global recession. Very few people were able to borrow at 1% interest rates and the *long term* corporate bond interest rate is a better indication of *market* interest rates . . .



These interest rates hit a low in mid-2003 and have since fluctuated around 5-6%.

Money supply growth was expanded rapidly in response to the 2001 economic downturn. The *rate* of money supply growth has since slowed, but is still expanding relatively rapidly . . .



. . . which is favourable for the stockmarket.

(Continued on Page 8)

Recommended International Investment Funds

Fund News

JPMorgan Fleming European Fledgeling Investment Trust plc has reduced its bank borrowings (i.e. its gearing) from around 18% of its portfolio to only about 2%. This trust has been appreciating rapidly in value, but the reduction in gearing would indicate a more cautious outlook from the Fund Manager.

Eaglet Investment Trust plc has continued to repurchase its own shares at a discount to net asset value. Over the last month it bought back 75,000 shares at 329 pence and 250,000 shares at 331 pence.

Fund Report

Aberdeen Asian Smaller Companies Investment Trust plc recorded a 21.6% gain in net assets to 31 January 2005 - with the share price rising 32.4% to a small premium above net asset value. The Fund Manager used this as an opportunity to raise additional funds, issuing 1,300,000 shares at prices above net asset value to raise £2.75 million in new equity. The company has also recently sought shareholder approval to issue up to 2,805,412 shares (i.e. 10% of the issued capital) at prices at or above the diluted net asset value. This increases the size of the company without disadvantaging existing shareholders.

The Manager remains optimistic and "expects Asian economies to remain healthy" although growth will

slow owing to higher interest rates and higher oil prices. Growth in domestic demand from consumers will be the most important factor driving economic growth. Asia's smaller companies still offer "good value", with the company's portfolio trading at just 13.3 times 2005 forecast earnings and producing a dividend yield of 3.4%. "Balance sheets are also strong" with the portfolio companies "in aggregate having no net debt".

Scottish Oriental Smaller Companies Trust plc lifted net assets 19.8% for its half year to 28 February, with the share price up 23.3% and the warrants up 34.5%.

The Fund Manager believes the economic outlook for Asia is "moderately positive", especially "relative to the rest of the world". The region will continue to benefit as developed countries "outsource manufacturing to Asia" with the resulting "strong foreign direct investment flows". Inflation, labour shortages in south China, a collapse of the US dollar, a significant slowdown in China's growth and an increase in the oil price are potential negatives for the region.

"Asian smaller companies trade at discounts" to larger companies and the Manager believes the fund's investment methods of focusing upon "well-managed, financially sound companies" is "well suited" to the current stockmarket volatility.

Current Advice	Investment Fund	EPIC Code	Initial Recommendation		Prem/Disc to Net Assets	Recent Price		Gain or Loss %	
			--- Date ---	Offer Price		Bid-Offer or Last Sale	NZ Cents		
Europe									
BUY	Fidelity European Values plc	FEV	13/05/03	463.5p	1291.1	-5%	843.0p	2217.8	+72
BUY	JFM Fleming Euro Fledgeling IT plc	JFF	15/01/02	226.5p	765.8	-14%	373.0p	981.3	+28
United Kingdom									
BUY	Aberforth Smaller Cos Trt plc	ASL	15/07/03	375.5p	1042.0	-11%	532.5p	1400.9	+34
HOLD	Eaglet Investment Trust plc	EIN	13/11/01	334.0p	1160.7	-16%	311.5p	819.5	-29
Asia Regional									
BUY	Aberdeen Asian Sm Co WARRANTS	AASW	09/09/03	75.3p	209.1		122.5p	322.3	+54
HOLD	Gartmore Pacific Growth Fund	*	29/10/85	41.4p	105.4		200.57p	527.7	+401
HOLD	HSBC Asian Fund	*	10/11/98	34.4p	106.3		44.73p	117.7	+11
HOLD	HSBC Hong Kong Growth Fund	*	07/04/98	159.4p	481.6		200.57p	527.7	+10
HOLD	Henderson Pacific Capital	*	08/08/00	342.2p	1122.6		292.5p	769.5	-31
BUY	Scot Oriental Sm Cos WARRANTS	SSTW	11/11/03	78.0p	211.5		95.25p	250.6	+18
HOLD	Schroder Asia Pacific WARRANTS	SDPW	13/07/99	25.5p	75.8		7.25p	19.1	-75
Japan									
BUY	Baillie Gifford Shin Nippon plc	BGS	11/01/94	156.0p	440.3	-12%	156.0p	410.4	-7
BUY	Invesco Japan Discovery Trust	IJD	13/07/99	95.5p	284.0	-10%	99.75p	262.4	-8
Korea									
HOLD	Baring Korea Trust	*	12/04/94	81.1p	209.4		120.8-128.2p	327.5	+56
International									
BUY	Aberdeen Emerging Markets	*	13/08/91	61.7p	184.0		151.7p	399.1	+117
BUY	Herald Investment Trust	HRI	12/10/04	310.8p	820.1	-12%	337.75p	888.6	+8
HOLD	Private Equity Investor plc	PEQ	11/12/01	122.5p	420.2	-12%	103.25p	271.6	-35

* United Kingdom based Unit Trust

The average Gains/Losses of all current investments from initial recommendation is +36.7%. This is equal to an average annual rate of +6.1%, based upon the length of time each position has been held. The average annual rate of gain of ALL recommendations (both the 17 current and 43 closed out) is +10.4%.

Investment Fund Survey

Current Advice	Investment Fund	Risk Rating	Superiority Rating	Market Correlation	Performance			Current Advice	Investment Fund	Risk Rating	Superiority Rating	Market Correlation	Performance		
					36 mth	12 mth	3 mth						36 mth	12 mth	3 mth
INTERNATIONAL															
AUSTRALIAN BASED UNIT TRUSTS															
	AMP FIJ International	High	-1%	0.72	-30	1	-3		Norwich International Index	Medium	+1%	0.89	-27	1	-1
	ANZ ING Global	Medium	-2%	0.53	-32	1	-4		Norwich World Leaders	Medium	-1%	0.86		1	-1
	Advance International	Medium	+0%	0.65	-31	1	-3		Old Mutual Global Equity	Medium	-0%	0.90		3	-1
	Advance Int'l Share MB	Medium	-2%	0.71	-30	2	-2		Old Mutual Worldwide	Medium	-3%	0.90	-33	1	0
	BT Global	Medium	-2%	0.62	-31	-4	-3	Buy	Prudential Global Growth	Medium	+1%	0.92	-26	3	0
	BT International	High	-2%	0.65	-37	-3	-4		Prudential Int'l Growth	Medium	+1%	0.92	-26	1	0
	Challenger Global Shares	Medium	-1%	0.66	-25	7	2		Quilter Global Growth	Medium	+5%	0.60		19	7
	Commonwealth Int'l Share	High	-2%	0.62	-34	-1	-3		Rathbone Global Companies	Medium	+8%	0.71	-0	18	8
Avoid	Dresdner Global	Medium	-7%	0.62	-43	-9	-7		Royal London International	Medium	-2%	0.91	-1	-1	-2
Avoid	Dresdner International	Medium	-7%	0.63	-42	-9	-7		SPFM Global Equity	High	+2%	0.66		5	2
	HSBC International	Medium	-1%	0.72	-30	0	-3		SPFM Global Growth	High	+0%	0.71		6	1
	Invesco Global Matrix	Very High	+1%	0.74	-19	11	2		SPFM International Growth	High	+0%	0.77		5	1
	JB Were International	High	-2%	0.70	-34	1	-4		SPFM Worldwide	Low	-1%	0.68		-2	-2
Buy	MLC Aust - Platinum Gbl	High	+8%	0.63	-12	-2	-1		SWIP Global	Low	-1%	0.78		0	-2
	MLC MKey Global Share	Medium	-1%	0.65	-31	0	-3		Scot Life Worldwide	Medium	-4%	0.86	-33	0	-2
	NAFM Inv Trt - Global	High	-0%	0.73	-28	3	-3		Scot Mutual International	Medium	+1%	0.86	-26	2	-1
	Perpetual ICSav - Int'l	Medium	-1%	0.70	-33	5	-2		Scot Wid. Global Select Gth	Low	-0%	0.75		1	-1
Buy	Platinum International	High	+8%	0.62	-11	-4	1	Buy	Scot Wid. Global Growth	Low	-2%	0.78		-1	-2
									Scot Wid. Int Equity Tracker	Medium	-0%	0.78		2	-1
									Singer & Freidlander Global	Medium	-4%	0.89	-29	1	0
									Sovereign Int'l Growth	Medium	+1%	0.69	-25	6	1
									St James's International	Medium	+7%	0.91	-8	10	3
NEW ZEALAND BASED UNIT TRUSTS															
	AMP International Share	High	+4%	0.65	-19	9	2	Avoid	BT Global	Medium	-11%	0.33	-54	-6	-1
	AMP Passive Int'l Share	Medium	-2%	0.73	-33	0	-3	Buy	Platinum Capital	Very Low	+8%	0.12	-24	-15	-9
Buy	ANZ World Equity Trust	Medium	+7%	0.66	-7	1	0		Templeton Global	Low	-2%	0.27	-36	-1	2
Buy	ASB World Shares	Medium	+7%	0.84	-9	6	0								
	BNZ International Equity	Medium	+7%	0.71	-6	11	6		NEW ZEALAND LISTED INVESTMENT TRUSTS						
	BTIS International Share	Low	+5%	0.67	-10	7	5		World Index Fund	Medium	-3%	0.83	-36	-4	-3
	ING International Share	Medium	+2%	0.74	-16	8	4		UNITED KINGDOM BASED LISTED INVESTMENT TRUSTS						
	NZ Guardian Global	High	+2%	0.74	-22	2	0		Alliance Trust	Medium	-0%	0.79	-26	2	-1
	Thoroughbred Int'l Equ.	Medium	-2%	0.75	-31	0	-1		Anglo & Overseas Trust	Very High	-2%	0.83	-32	17	2
	Tower Global Equity	Medium	-3%	0.75	-34	3	0		Bankers Investment	Medium	+1%	0.83	-27	6	1
	Tower Tortis Intern'l	Medium	-2%	0.77	-34	-1	-3		Brit Empire Securities	Medium	+20%	0.66	35	30	6
	Westpac International	Medium	0%	0.82	-27	6	0	Buy	Brunner Invest. Trust	Medium	-4%	0.91	-33	5	-1
								Buy	Caledonia	Very High	+12%	0.65		25	-2
								Buy	Capital Gearing Trust	Very Low	+17%	0.35	25	15	0
									EP Global Opportunities	Medium	+3%	0.54	15	8	
									Edinburgh Investment	Very High	-4%	0.79	-37	4	-2
									Edinburgh Worldwide	High	-4%	0.67	-37	-2	2
									Establishment IT	Very Low	+13%	0.23		-9	0
									Foreign & Colonial	High	-2%	0.79	-32	3	0
									Gartmore Global	Medium	-1%	0.58		7	3
								Buy	Henderson Strata Inv	Very High	+7%	0.55	-2	33	13
									JPMF Overseas	High	-2%	0.88	-32	6	0
									Jupiter Global Green	High	-2%	0.47		23	5
									Jupiter Primadona	High	+4%	0.58	-4	24	12
									Law Debenture Corp.	High	+4%	0.67	-20	10	6
									Majedie Investment	High	-0%	0.60	-22	16	13
									Martin Currie Portfolio	Medium	+4%	0.82	-13	1	1
									Merrill Asset All (Bal)	Very Low	+1%	0.12		-1	-1
									Merrill Asset All (Gth)	Very Low	-0%	0.50	-29	1	-1
									Mid Wynd Invest Trust	Medium	+3%	0.49	-21	-4	-1
									Monks Investment	High	+3%	0.87	-22	6	0
									Murray International	High	+4%	0.86	-11	8	0
									New Star	High	+6%	0.37		35	26
									Pantheon International	Medium	+5%	0.40	-7	15	5
									Personal Assets Trust	Very Low	+5%	0.57	-13	2	0
								Buy	RIT Capital Partners	Medium	+20%	0.43	32	13	-5
									Scottish Mortgage & Trt	High	+2%	0.86	-26	5	0
									Scottish Invest. Trust	High	-2%	0.81	-32	15	3
									Scottish American Inv.	Very High	-0%	0.81	-25	12	8
									Second Alliance	Medium	-0%	0.76	-25	4	0
									Secs Trust of Scotland	High	-2%	0.76	-24	18	9
									Witan Investment Coy	High	-2%	0.81	-29	13	5
								Buy	World Trust Fund	Medium	+7%	0.41		20	11
UNITED KINGDOM BASED INVESTMENT TRUSTS - SPLIT CAPITAL															
Avoid	Asset Management	Very Low	-15%	0.02	-66	4	5								
Avoid	JPMF Worldwide Income	Very High	-9%	0.30	-48	-6	-8								
Avoid	Murray Global Return	Very High	-11%	0.51	-48	25	0								
INTERNATIONAL SMALLER COS															
UNITED KINGDOM BASED UNIT TRUSTS															
	Invesco Perp Global Small Cos	Medium	+0%	0.98	-5	8	2								
	NatWest Global Small Cap	Medium	-0%	0.94											
UNITED STATES															
AUSTRALIAN BASED UNIT TRUSTS															
	BT American Growth	Medium	-1%	0.51	-42	-3	-5								
	Perpetual Fid. America	Low	-0%	0.49	-37	8	0								
UNITED KINGDOM BASED UNIT TRUSTS															
	ACM American Growth	Low	-6%	0.60	-45	-10	-8								
	AXA American	Low	-3%	0.71	-39	-1	0								
	Aberdeen North American	Very Low	-3%	0.73	-37	-2	-2								
	Aegon American	Low	-4%	0.80	-41	-5	-2								
	Allianz Dres North American	Very Low	-3%	0.75	-34	-7	-2								
	Artemis North American Growth	Medium	-2%	0.84		-7	-2								

Current Advice	Investment Fund	Risk Rating	Superiority Rating	Market Correlation	Performance		
					36 mth	12 mth	3 mth
	BG American	Very Low	+1%	0.73	-30	-1	-0
	BGI American Growth	Medium	+0%	0.79	-3	-2	-2
	Baring American Gth	Low	-3%	0.69	-38	-4	-2
	Britannic American	Low	-4%	0.75	-41	-2	-2
	CIS US Growth	Low	-1%	0.75	-38	-4	-2
	CS MM North America	Medium	+0%	0.71	-2	-2	-3
	CS Transatlantic	Low	-4%	0.75	-39	-2	-1
	DWS American Growth	Low	-2%	0.73	-39	-1	-3
	F & C North American 1	Low	-6%	0.79	-43	-6	-2
	Fidelity American	Low	+3%	0.75	-31	-2	-4
	Framlington American Gth	Low	-1%	0.67	-34	-2	-3
	GAM North America	Very Low	+6%	0.38	-22	-7	-3
	HSBC American Index	Low	-0%	0.79	-38	-3	-3
	HSBC Splst American	Low	-2%	0.76	-40	-4	-3
	Halfax IFM Nth American	Medium	0%	0.93	-4	-3	-3
	Inscap US Equities	Medium	+0%	0.93	-3	-3	-3
	Insight US Equity	Low	-4%	0.73	-42	-4	-3
	Invesco Perp US Aggressive	Medium	-6%	0.70	-49	-3	-5
	Invesco Perp US Equity	Medium	-5%	0.71	-46	-5	-5
	Investec American	Low	-1%	0.84	-5	-5	-2
	JPMF United States Growth	Low	0%	0.76	-35	-2	0
	Jupiter North America	Medium	-3%	0.75	-41	-2	-2
	L & G (Barclays) America	Low	-2%	0.70	-37	-3	-2
	L & G North American	Low	-2%	0.78	-38	-5	-2
	L & G US Index	Low	-2%	0.79	-36	-3	-2
	Lazard Nth American Gth	Low	-2%	0.77	-37	-3	0
	Lincoln North American	Low	-2%	0.83	-37	-2	-2
	M & G American & General	Low	-2%	0.78	-35	-1	-1
	MFS US Growth Equity	Medium	-2%	0.69	-8	-5	-5
	MSDW UK Equity	Very High	+4%	0.84	6	1	1
	MSDW US Equity Growth	High	-1%	0.78	-7	-5	-5
	Martin Currie North American	Low	-1%	0.76	-36	-2	1
	Merrill Lynch American	Low	0%	0.72	-34	-2	-1
	New Star American Portfolio	Medium	+1%	0.83	-1	-1	-1
	New Star North America Ret A	Low	-3%	0.82	-38	-5	-2
	Newton American	Low	-3%	0.73	-39	-0	0
	Old Mutual North American	Low	+1%	0.75	-31	-1	-1
	Prudential North American	Low	+3%	0.79	-34	-2	-2
	Royal London North American	Low	-5%	0.75	-42	-3	-1
	S & W American	Low	+2%	0.75	-30	1	-1
	SG American Growth	Medium	-1%	0.74	-40	-5	-4
	SWIP North American	Medium	+0%	0.81	-3	-1	-1
	Schroder North American	Medium	-3%	0.80	-43	-3	-2
	Scot Life America	Low	-5%	0.75	-41	-3	-1
	Scot Mutual North American	Low	-2%	0.80	-36	-3	-2
	Scot Wid. American	Low	-3%	0.69	-40	-5	-3
	Scot Wid. American Sel Gth	Medium	+0%	0.83	-4	-3	-1
	Sing & Fried Amer Growth	High	+0%	0.89	-1	-2	-2
	St James's North America	Low	+0%	0.69	-34	4	1
	Stan Life America	Low	+2%	0.78	-33	-1	-1
	Threadneedle American Gth	Very Low	-2%	0.47	-36	0	-2
	UBS US Equity	Medium	+2%	0.79	1	-2	-2

UNITED KINGDOM BASED LISTED INVESTMENT TRUSTS

	American Opportunity	Very Low	+4%	0.06	-22	7	-0
	Edinburgh US Tracker	Medium	-2%	0.78	-43	-3	-2
	JPMF American	High	-2%	0.75	-45	-2	-2
Avoid	Second London American	Very Low	-23%	0.05	-66	-13	-2

UNITED STATES SMALLER COS

UNITED KINGDOM BASED UNIT TRUSTS

	F & C US Smaller Coys	Low	+5%	0.72	-20	5	1
	Fidelity American Spec Sits	Low	-3%	0.73	-34	-10	-5
	Invesco Perp US Smaller Coys	Medium	-5%	0.74	-39	-6	-6
	Merrill Lynch American Opps	Medium	0%	0.69	-29	-0	-4
Buy	Old Mutual UK Select Small Cos	Very Low	+7%	0.45	21	8	8
	Quilter UK Smaller Companies	Very Low	+2%	0.29	5	4	4
	SWIP North American Small Cos	Low	+1%	0.67	4	-1	-1
	Schroder US Smaller Coys	Low	+6%	0.74	-19	5	-3
	Scot Wid. American Small Cos	Low	+2%	0.66	5	-1	-1
	Threadneedle Amer Small Cos	Low	+1%	0.70	-27	-0	-2

UNITED KINGDOM BASED LISTED INVESTMENT TRUSTS

Buy	F & C US Smaller Coys	Medium	+4%	0.57	-25	6	2
Buy	JPMF US Discovery	High	+7%	0.53	-19	4	0
Buy	Nth Atlantic Smaller	Very Low	+15%	0.35	12	22	-1
Buy	Renaissance U.S.	Very Low	+18%	0.09	-1	-2	4

United Kingdom Share Prices



Current Advice	Investment Fund	Risk Rating	Superiority Rating	Market Correlation	Performance		
					36 mth	12 mth	3 mth

UNITED KINGDOM

UNITED KINGDOM BASED UNIT TRUSTS

	AXA UK Equity Income	Very Low	-0%	0.44	2	2	2
	AXA UK Ethical B	Medium	+2%	0.43	3	-3	-3
	AXA UK Growth	Medium	+2%	0.91	-24	5	-0
	AXA UK Opportunities	High	+8%	0.82	-8	1	-1
Buy	AXA UK Tracker	Medium	+1%	0.91	-23	6	1
	Abbey Nat1 N & P UK Growth	High	+0%	0.78	-23	6	1
	Abbey Nat1 Stockmarket 100	Medium	+3%	0.87	-18	9	0
	Abbey Nat1 UK Growth	Medium	-1%	0.77	-26	6	1
	Aberdeen UK Growth	Medium	+2%	0.89	-22	12	0
Buy	Aberdeen UK Mid-Cap	High	+8%	0.78	-15	19	2
	Aegon UK Equity Growth	Medium	+1%	0.84	-20	7	1
	Allianz Dres UK Index	Medium	+0%	0.83	6	1	1
	Allianz Dres UK Growth	Medium	+2%	0.81	7	3	3
	Allianz Dres UK Equity	Medium	+0%	0.92	7	2	2
	Artemis MM UK Equity Income	Very Low	+6%	0.35	14	1	1
	Artemis MM UK Growth	Low	+3%	0.48	10	4	4
Buy	Artemis UK Growth	Medium	+12%	0.69	10	10	4
Buy	Artemis UK Special Sits	Low	+15%	0.63	17	9	6
	BG British 350	Medium	+3%	0.83	-18	6	-0
	BGI Growth & Income	Medium	+1%	0.74	6	0	0
	BGI UK Growth	Medium	+1%	0.72	6	1	1
	Baring UK Growth	Medium	+2%	0.85	-21	5	2
	Britannic UK Focus	Low	-1%	0.68	3	-0	-0
	Britannic UK General	Medium	-1%	0.83	-28	5	0
	CIS UK FTSE-4GOOD Tracker	Low	+0%	0.80	6	0	0
	CIS UK Growth	Medium	+1%	0.87	-22	6	0
	CS FTSE 100 Tracker	Medium	+1%	0.86	-25	6	0
	CS MM UK Growth	Low	+3%	0.64	9	3	3
	Cazenove Growth Portfolio	Low	-1%	0.74	2	1	1
	Cazenove MM Univ Growth Port.	Low	+1%	0.65	6	0	0
	Cazenove MM Univ UK Growth	Low	+4%	0.65	9	2	2
	Cazenove Managed UK Equity	Medium	+2%	0.81	9	3	3
	Cazenove UK Equity	Medium	+4%	0.86	-14	7	2
	Cazenove UK Growth & Income	Medium	+0%	0.81	6	1	1
	DWS Capital Growth	Medium	+0%	0.76	5	1	1
	DWS UK Blue Chip	High	-0%	0.83	-28	7	1
	DWS UK Equity	Medium	+1%	0.77	-27	4	-0
	DWS UK Growth	Medium	+1%	0.80	-25	4	1
	DWS UK Opportunities	Very Low	+5%	0.21	5	1	1
	Direct Line FTSE 100 Tracker	Medium	+1%	0.91	-19	9	1
	Direct Line FTSE-4GOOD Track.	Medium	+1%	0.94	9	1	1
	Eagle Star UK Index Tracker	Medium	+2%	0.94	9	1	1
	F & C FTSE 100 Tracker	Medium	+0%	0.87	-24	6	1
	F & C FTSE All Share	Medium	+1%	0.87	-22	7	1
	F & C UK Equity	Medium	+0%	0.86	5	-0	-0
	F & C UK Equity 1	Medium	+2%	0.92	7	1	1
	F & C UK Growth & Income	Low	-0%	0.59	3	-1	-1
Buy	Fidelity Special Situations	Medium	+14%	0.70	13	11	3
Buy	Fidelity UK Aggressive	Low	+7%	0.68	14	3	3
	Fidelity UK Growth	Medium	+4%	0.89	-19	5	-0
	First State British Opps	High	+2%	0.76	-22	4	0
	Framlington Blue Chip	Medium	-2%	0.80	1	0	0
	Framlington UK Growth	Medium	-0%	0.85	-26	0	1
Buy	GAM UK Diversified	Medium	+9%	0.50	-2	1	-1
	Gartmore UK Focus	Medium	+0%	0.54	5	3	3
	Gartmore UK Growth	Medium	+0%	0.80	7	2	2
	Gartmore UK Index	High	+6%	0.80	-13	7	1
	Gartmore UK Tracker	Medium	+1%	0.96	9	1	1
	HSBC British	Medium	+2%	0.83	-24	5	-1
	HSBC FTSE 100 Index	Medium	-1%	0.82	-24	6	1
Buy	HSBC FTSE 250 Index	Medium	+7%	0.68	-9	7	1
	HSBC FTSE All Share Index	Medium	+0%	0.86	6	1	1
	HSBC Household Names	Medium	+5%	0.85	-17	7	0
	HSBC Splst UK Growth	Medium	+3%	0.84	-20	7	2
	HSBC UK Gth & Inc	Medium	+3%	0.85	-21	6	1
	Halfax IFM Special Sit.	Medium	-0%	0.72	2	1	1
	Halfax IFM UK Growth	Low	-0%	0.83	4	-0	-0
	Halfax IFM UK FTSE 100 Track.	Low	+0%	0.89	6	-0	-0
	Halfax IFM UK All Share	Medium	+0%	0.85	6	-0	-0
	Henderson UK Capital Growth	Medium	+3%	0.81	-15	6	1
	Hill Samuel Capital	Medium	-0%	0.81	-24	3	0
	Inscap UK Equities	Medium	+2%	0.88	8	1	1
	Insight UK Discretionary	Low	+3%	0.75	10	3	3
	Insight UK Dynamic Managed	Very Low	+3%	0.40	7	2	2
	Insight UK Equity	Medium	-0%	0.83	3	0	0
	Invesco Perp UK Key Trends	High	+3%	0.74	-17	12	2
Buy	Invesco Perp UK Growth	Medium	+8%	0.62	-13	4	-2
Buy	Invesco Perp UK Equity	Medium	-1%	0.79	-27	9	-1
	Invesco Perp UK Aggressive	High	+20%	0.48	25	8	-0
	Investec UK Blue Chip	Medium	+2%	0.87	6	0	0
	Investec UK Opportunities	Medium	+3%	0.78	7	-0	-0
	Investec UK Value	Very Low	+2%	0.64	9	2	2
Buy	JPMF UK Dynamic	Medium	+10%	0.74	-0	8	3
	Jupiter Environmental	Low	+4%	0.54	-9	14	3
	Jupiter UK Growth	Medium	+5%	0.81	-12	9	1
Buy	Jupiter UK Special Situations	Medium	+3%	0.60	-15	3	5
	Jupiter Undervalued Assets	Low	+10%	0.75	6	10	2
	L & G (A & L) Capital Growth	Medium	+3%	0.89	-19	7	1
	L & G (A & L) UK 100 Index	Medium	+1%	0.87	-21	8	1
	L & G (Barclays) Capital	Medium	+1%	0.87	-22	6	0
	L & G (Barclays) 500	Medium	+1%	0.71	-20	4	2
	L & G UK Index	Medium	+1%	0.87	-22	6	1
	L & G UK Stockmarket	Medium	+1%	0.88	-22	8	1
	Lincoln Growth	Medium	+1%	0.84	-23	4	1

(Continued on Page 6)

Current Advice	Investment Fund	Risk Rating	Superiority Rating	Market Correlation	Performance			Current Advice	Investment Fund	Risk Rating	Superiority Rating	Market Correlation	Performance		
					36 mth	12 mth	3 mth						36 mth	12 mth	3 mth
	M & G Blue Chip	High	-0%	0.87	-28	3	-0		Invesco Income Growth	High	+2%	0.49		8	2
	M & G British Opportunities	Medium	+3%	0.73	-16	13	6		Invesco City & Commer.	Very High	-0%	0.16		30	6
	M & G Capital	Medium	-1%	0.80	-26	1	2		JPMF Claverhouse	Very High	-0%	0.75		9	-1
	M & G Index Tracker	Medium	+1%	0.88	-22	6	1		JPMF Mid Cap	Very High	+6%	0.58		9	4
	M & G Recovery	Medium	+6%	0.79	-6	11	6		Keystone Inv Trust	High	+1%	0.44		11	-5
	M & G UK Growth	High	+0%	0.85	-24	7	2		Life Offices Opport.	Very Low	-10%	0.16		-36	4
	MFS UK Equity	Medium	+1%	0.76		9	2	Avoid	London & St Lawrence	Very Low	+0%	0.29		-3	13
	MLC UK Equity	Medium	+0%	0.70		5	1		Lowland Investment Co	Medium	+11%	0.45		7	16
	MSDW UK Index Linked	Very Low	-1%	0.01		-5	-3		Merchants Trust	Very High	+1%	0.69		-31	8
	Martin Currie UK Growth	Medium	+6%	0.80	-15	5	0		Murray Income Trust	High	+3%	0.83		-21	16
	Merrill Growth Portfolio	Low	-0%	0.90		5	0		Perpetual Income & Gth	Medium	+11%	0.55		-2	10
	Merrill UK	Medium	+3%	0.90		16	1	Buy	Schroder UK Growth	Low	-3%	0.44		-23	0
	Merrill UK Dynamic	High	+5%	0.82		20	4		Schroder Income & Grwth	Very Low	+3%	0.37		-13	6
	Merrill UK Spec Sits	Medium	+6%	0.82	-10	16	3		Shires Income	Very High	-1%	0.30		-35	13
	Morley SF UK Growth	Low	-0%	0.61		4	0		Temple Bar Inv. Trust	Medium	+5%	0.66		-13	18
	Morley UK Focus	Very Low	+0%	0.29		7	2		Value & Income Trust	Low	+7%	0.43		-3	20
	NFU Mutual UK Growth	Medium	+0%	0.88		7	0								
	NPI UK Equity Tracker	Medium	+0%	0.89		6	1								
	NatWest Growth	Medium	+0%	0.88		7	1	Buy	Aberforth Geared (cap)	Very High	+30%	0.28		95	81
	New Star Select Opportunities	Low	+2%	0.24		11	6	Buy	Allianz Dres Income Gth	Low	+10%	0.04		44	11
	New Star UK Alpha	Low	+4%	0.31		8	1	Avoid	City of Oxford Grd Inc	High	-32%	0.14		-66	-43
	New Star UK Growth	Low	+3%	0.54		14	2	Avoid	Danae - Capital	Very High	-19%	0.05		-94	-37
	Newton Growth	Medium	+1%	0.76		7	-0	Buy	Ecofin Water & Power(c)	Very Low	+31%	0.02		-22	124
	Newton UK Oportunities	Low	+2%	0.57		8	2	Buy	Edinburgh Income & Val.	High	+8%	0.42		-13	25
	Norwich Blue Chip Tracking	Medium	+0%	0.88	-24	6	1	Buy	Edinburgh High Income	Very High	+8%	0.57		-29	36
	Norwich UK Equity	Medium	+0%	0.89		6	2	Buy	Framlington I & C - Cap	Very High	+26%	0.54		8	65
	Norwich UK Ethical	Low	+1%	0.51		5	-0	Avoid	Gartmore SNT	Very Low	-37%	0.00		-98	-81
	Norwich UK Growth	Medium	+1%	0.71	-20	1	4	Avoid	Gartmore High Income	Very High	-13%	0.23		-36	8
	Norwich UK Index	Medium	+1%	0.94	-22	6	1		Henderson High Income	Very High	+2%	0.41		-19	15
	Old Mutual Equity Income	Low	+2%	0.57		9	1	Buy	Invesco Recovery 2005	Medium	+7%	0.12		-22	36
	Old Mutual Ethical	Low	+3%	0.41		10	1		Investec High Income	Medium	-0%	0.07		-35	38
	Old Mutual UK Equity	Medium	+0%	0.82		5	2	Buy	JPMF Income & Gth (cap)	Very High	+12%	0.50		45	14
	Old Mutual UK Select Equity	Medium	-0%	0.91		6	0		JPMF Income & Capital	Medium	+2%	0.21		-23	33
	Old Mutual UK Select Large Cap	Medium	-1%	0.79		4	1	Avoid	Jersey Phoenix	Very High	-34%	0.28		-81	-17
	Prudential UK Growth	Medium	+0%	0.75	-30	0	-5	Buy	Jupiter Dividend & Gth	Very High	+8%	0.43		-42	45
	Prudential UK Index	Medium	+2%	0.69	-16	18	12		M & G Equity Trust - Cap	Medium	-5%	0.16		-18	27
	Rathbone Capital	Medium	+5%	0.75	-15	7	5	Buy	M & G High Income - Cap	Very High	+9%	0.32		-19	36
Buy	Rathbone Spec Situations	Low	+15%	0.47	30	8	5		M & G Income	Low	-2%	0.20		-20	24
	Royal London UK Equity	Low	+1%	0.80	-11	9	1	Avoid	M & G Recovery	Very Low	-7%	0.12		10	-3
	Royal London UK Growth	Medium	+0%	0.89	-21	8	1	Buy	Martin Currie Enhanced	Very High	+9%	0.27		-3	38
	Ruffer Equity & General	Very Low	-2%	0.07		-2	4		Merrill FTSE100 G&I (c)	Very Low	+5%	0.27		7	-3
Buy	SG UK Growth	High	+8%	0.58	-9	1	3	Buy	New Fulcrum	Very High	+19%	0.25		-14	109
	SG UK Special Opps	High	-2%	0.43		-1	3	Avoid	Premier High Income	Low	-49%	0.06		-84	-34
	SPFM Special Situations	Low	-0%	0.41		3	2	Buy	Rights & Issues	Very Low	+11%	0.25		-21	24
	SVM UK 100 Select	Very High	-0%	0.90		6	1		Schroder Split Invest.	Very High	+6%	0.32		-17	22
	SVM UK Opportunities	Low	+3%	0.31		11	5								
	SWIP UK Equity	Medium	+0%	0.64		4	3								
	Schroder UK Enterprise	Medium	+5%	0.83	-16	7	1								
	Schroder UK Equity	Medium	+2%	0.87	-22	8	2								
Buy	Schroder UK Mid 250	Medium	+13%	0.64	14	8	1								
	Scot Life UK Equity	Medium	+1%	0.89	-17	9	1								
	Scot Mutual Growth	Low	+3%	0.87	-15	6	0								
	Scot Mutual Opportunity	Medium	+3%	0.87	-18	6	1	Buy	AXA UK Smaller	Medium	+2%	0.96		-11	7
	Scot Mutual UK Equity	Medium	-1%	0.87	-25	6	1		Abbey Nat'l Smaller Cos	Medium	-3%	0.83		-14	10
Buy	Scot Mutual UK All Share Index	Medium	+7%	0.88	-11	10	1		Aberdeen UK Emerging	Medium	+0%	0.89		-1	5
	Scot Wid. UK All Share Track	Medium	+2%	0.80	-14	10	1		Aberforth UK Small Coys	Low	+13%	0.89		29	18
	Scot Wid. UK Growth	Low	+3%	0.72	-14	4	-2		Allianz Dres UK Mid-Cap	Low	+6%	0.83		9	2
	Scot Wid. UK Index	Very Low	-5%	0.21	-26	-5	-4	Buy	Artemis New Enterprises	Very High	+4%	0.86		4	3
	Scot Wid. UK Tracker	Low	+0%	0.70		6	1		Artemis UK Smaller Coys	Low	+12%	0.82		33	19
	Sing & Fried UK Growth Retail	Medium	+0%	0.74		6	1	Buy	BG British Smaller Coys	Medium	+7%	0.68		13	19
	Skandia Equity	Medium	-0%	0.79		3	-1		BGI Smaller Companies	High	+1%	0.90		8	7
	Solus UK Special Situations	Medium	-3%	0.75	-30	13	6		Baring UK Small Coys	Medium	-0%	0.88		-9	13
	Sovereign FTSE 100	Medium	-1%	0.88	-25	7	-1		Britannic Smaller Companies	Medium	-0%	0.69		-5	13
	Sovereign UK Growth	High	+4%	0.83	-19	8	2	Buy	CS Smaller Companies	Low	+3%	0.85		7	2
Buy	St James's Recovery	Medium	+8%	0.57	-8	-1	0		CS UK Mid 250	Low	+0%	0.83		-10	9
	St James's Tracker	Medium	+4%	0.89	-17	8	1		Cavendish Opportunities	Medium	+7%	0.82		19	12
	St James's UK & Gen Prog.	Medium	+4%	0.81	-16	6	-1		Cazenove UK Smaller Coys	Medium	-1%	0.90		-13	16
	Stan Life UK Equity Gth	Medium	+4%	0.80	-15	11	1	Buy	F & C AIM Growth	Low	+4%	0.76		7	17
	Stan Life UK Opprtunities	Very Low	+4%	0.33		12	2		F & C UK Smaller Companies	Medium	+0%	0.91		-13	14
	TU British	Medium	-0%	0.77		3	-1	Buy	First State British Small Cos	Medium	+16%	0.80		55	26
	Threadneedle UK Growth	Medium	+5%	0.70	-22	5	1		Framlington UK Smaller Coys	Medium	+15%	0.89		50	29
	Tilney UK Equity	Medium	+2%	0.87	-19	4	-1	Buy	Gartmore UK & Irish Small Cos	High	+5%	0.89		12	8
	UBS UK Select	Medium	+0%	0.81		7	2		HSBC Splst UK Smaller Coys	Medium	+1%	0.87		-0	8
									Halifax IFM Smaller Companies	Low	+7%	0.86		14	4
									Henderson UK Small Coys	High	-0%	0.91		-15	12
									Insight UK Small Cap	Low	+4%	0.91		4	14
								Buy	Invesco Perp UK Small Coys	Medium	+7%	0.85		16	19
									Invesco Perp UK Small Cos Equ.	Low	+2%	0.89		-4	13
Buy	3i Group	Very High	+3%	0.40	-29	4	1	Buy	Investec UK Smaller Cos	Low	+7%	0.81		17	8
Buy	Active Capital Trust	Very Low	+21%	0.01		8	11		JPMF UK Smaller Companies	Medium	+6%	0.94		13	14
	Advance UK	Medium	+8%	0.64		6	14		Jupiter UK Small Cos	Medium	+7%	0.80		16	20
	Albany	Low	+3%	0.54		-7	13	Buy	L & G UK Small Coys	Medium	+2%	0.86		0	8
Buy	Aurora Invest Trust	Very High	+17%	0.51	40	22	9		Lazard UK Small Coy	Low	+6%	0.89		5	11
	British Portfolio Trt	High	+2%	0.78	-22	9	1		M & G Smaller Companies	Medium	+6%	0.93		13	19
	British American IT	Very Low	+1%	0.07	-11	17	13		Marlborough Special Situations	Medium	+20%	0.84		79	26
	British Assets	High	-5%	0.78	-37	2	-1	Buy	Merrill Lynch UK. Small Cos	Medium	+10%	0.76		24	26
	City Merchants High Yld	Very Low	-2%	0.08	-18	6	-4		Norwich UK Smaller Cos	Low	+3%	0.94		1	4
	City of London	High	-0%	0.70	-27	10	-1	Buy	Old Mutual UK Select Mid Cap	Medium	+4%	0.74		11	0
	Collective Assets	Very Low	+0%	0.30		-9	2		Premier UK Smaller Coys	Medium	+5%	0.71		10	18
	Deutsche Equity Income	Medium	+0%	0.55	-19	-3	0		Prudential Smaller Companies	Low	+7%	0.83		12	22
	Edinburgh UK Tracker	Medium	-2%	0.84	-28	5	2	Buy	Rathbone Smaller Coys	Medium	+6%	0.87		-11	17
Buy	Enhanced Zero Trust	Very High	+50%	0.02	-86	-16	31		S & W Smaller Securities	Medium	-0%	0.74		-6	26
Buy	F & C Capital & Income	Very Low	+8%	0.14		8	-2		SWIP UK Smaller Companies	Medium	+3%	0.82		14	5
	F & C Income Growth	Medium	+2%	0.52	-18	9	4		Schroder UK Smaller Coys	Medium	+7%	0.94		14	10
	Falcon Investment Trust	Medium	+4%	0.29	-16	21	13	Buy	Scot Mutual UK Small Coys	Medium	-5%	0.93		-18	8
Buy	Fidelity Special Values	Medium	+16%	0.53	12	12	1		Scot Wid. UK Smaller Coys	Medium	+1%	0.83		6	2
Buy	Finsbury Growth	High	+13%	0.64	7	27	5		Stan Life UK Smaller Cos	Low	+3%	0.84		4	13
Buy	Gartmore Growth Opps	Low	+21%	0.32	57	20	11		Threadneedle UK Smaller Cos	Medium	+1%	0.90		-3	7
	Glasgow Income Trust	Very High	+4%	0.59	-27	11	-0		Tilney UK Smaller Cos	Low	-2%	0.91		-11	-7
Buy	Hansa Trust	Low	+20%	0.20		51	12		UBS UK Smaller Companies	High	+5%	0.73		22	16
	ISIS UK Select	Very High	+3%	0.69		4	2		Unicorn UK Smaller Coys	Medium	-5%	0.63		-6	4
Buy	Independent Invest Trt	Medium	+8%	0.28		-8	-3								

UNITED KINGDOM BASED INVESTMENT TRUSTS - SPLIT CAPITAL

Current Advice	Investment Fund	Risk Rating	Superiority Rating	Market Correlation	36 mth	12 mth	3 mth	Current Advice	Investment Fund	Risk Rating	Superiority Rating	Market Correlation	36 mth	12 mth	3 mth
Buy	Aberforth Geared (cap)	Very High	+30%	0.28	95	81	22	Buy	Allianz Dres Income Gth	Low	+10%	0.04	44	11	3
Buy	Allianz Dres Income Gth	Low	+10%	0.04	44	11	3	Avoid	City of Oxford Grd Inc	High	-32%	0.14	-66	-43	3
Avoid	City of Oxford Grd Inc	High	-32%	0.14	-66	-43	3	Avoid	Danae - Capital	Very High	-19%	0.05	-94	-37	-2
Avoid	Danae - Capital	Very High	-19%	0.05	-94	-37	-2	Buy	Ecofin Water & Power(c)	Very Low	+31%	0.02	-22	124	20
Buy	Ecofin Water & Power(c)	Very Low	+31%	0.02	-22	124	20	Buy	Edinburgh Income & Val.	High	+8%	0.42	-13	25	6
Buy	Edinburgh Income &														

Current Advice	Investment Fund	Risk Rating	Superiority Rating	Market Correlation	Performance		
					36 mth	12 mth	3 mth
UNITED KINGDOM BASED LISTED INVESTMENT TRUSTS							
Buy	Aberforth Smaller Coys	Low	+11%	0.72	16	11	-1
	Acorn Income Fund	Medium	+2%	0.47	-12	15	6
	Britannic Smaller Coys	High	+5%	0.77	8	24	8
Buy	Chelverton Growth Trust	Medium	+11%	0.24	42	13	26
Buy	Discovery Trust	Very High	+10%	0.67	22	29	12
	Dunedin Smaller Coys IT	High	+2%	0.77	-3	17	5
	Eaglet Investment Trust	Very High	-4%	0.77	-27	-10	7
Avoid	Edinburgh Smaller Coys	Very High	-7%	0.71	-34	18	10
	JPMF Mercantile	High	+3%	0.82	-6	4	2
Buy	Framlington Innovation	Medium	+12%	0.75	31	28	7
Buy	Gartmore Fledgling Indx	Medium	+22%	0.54	76	25	6
Buy	Gartmore Small Coys	High	+10%	0.65	40	20	16
Buy	Henderson Smaller Cos	Very High	+9%	0.85	19	6	
Buy	I & S UK Smaller Coys	Very High	+8%	0.74	25	32	12
Buy	Invesco England	Medium	+14%	0.71	27	30	15
	Invesco Perp UK Smaller	Medium	+4%	0.73	20	4	
Buy	JPMF Smaller Cos	High	+7%	0.71	21	27	12
	Montanaro UK Small Coys	Medium	+3%	0.72	-6	33	6
	Osprey Small Cos Income	Medium	-3%	0.45	9	5	
Buy	Platinum Trust	Very Low	+12%	0.30	5	4	
	Schroder UK Mid & Small	Medium	+2%	0.60	13	2	
	Shires Smaller Coys	Medium	+3%	0.54	2	25	5
Buy	Throgmorton Trust	Very High	+11%	0.82	30	39	15

UNITED KINGDOM BASED INVESTMENT TRUSTS - SPLIT CAPITAL

Current Advice	Investment Fund	Risk Rating	Superiority Rating	Market Correlation	36 mth	12 mth	3 mth
Buy	BFS Small Companies	Medium	+15%	0.39	55	22	13
Buy	Small Cos Value Trt (c)	Very High	+13%	0.20	56	22	

EUROPE

AUSTRALIAN BASED UNIT TRUSTS

Current Advice	Investment Fund	Risk Rating	Superiority Rating	Market Correlation	36 mth	12 mth	3 mth
	BT Europe Growth	Low	-2%	0.54	-25	5	-1
	Dresdner Europe Growth	Low	-3%	0.50	-23	7	-1
	Perpetual Fid. Europe	Low	-1%	0.49	-15	12	0
Buy	Platinum Europe	Medium	+8%	0.64	-4	1	-1

NEW ZEALAND BASED UNIT TRUSTS

Current Advice	Investment Fund	Risk Rating	Superiority Rating	Market Correlation	36 mth	12 mth	3 mth
	BTIS European Share	Very Low	-2%	0.61	-13	8	4
	Tower Spotlight Europe	Low	-3%	0.58	-22	5	-1

UNITED KINGDOM BASED UNIT TRUSTS

Current Advice	Investment Fund	Risk Rating	Superiority Rating	Market Correlation	36 mth	12 mth	3 mth
	AXA European Growth	Medium	+1%	0.74	-15	12	1
	Aberdeen European Opps	Low	+3%	0.85	14	1	
	Aberdeen European Growth	High	+3%	0.87	-17	13	1
	Aegon European	Medium	-1%	0.86	-18	9	-2
	Allchurches Euro Growth	Low	+2%	0.85	-13	7	0
	Allianz Dres Euro Index	Medium	+1%	0.85	-16	11	0
	Allianz Dres European	Medium	+1%	0.86	10	0	
Buy	Artemis European Growth	Low	+12%	0.83	24	18	3
	BG Europe	Medium	-2%	0.82	-25	8	-2
Buy	BGI European	Low	+4%	0.52	14	0	
	Baring Euro Sel.	Medium	+10%	0.73	23	19	5
	Baring European Growth	High	-1%	0.88	-22	11	2
	Britannic European	Medium	+1%	0.83	-19	9	-4
	CIS European	Medium	-2%	0.89	-22	10	0
Buy	CS Euro Frontiers	Medium	+19%	0.24	7	4	
	CS European	High	-1%	0.88	-26	8	-1
	CS MM European Portfolio	Medium	+4%	0.73	16	2	
	Cazenove European Portfolio	High	+2%	0.93	-13	14	1
	DWS European Growth	Medium	-1%	0.85	-20	11	0
	DWS European Opportunities	Low	+3%	0.54	19	4	
Buy	F & C European 1	High	+3%	0.87	-15	10	-1
Buy	Fidelity European	Low	+10%	0.89	18	22	3
Buy	Fidelity European Opps	Very High	+8%	0.87	-10	16	3
	Framlington European	Medium	+3%	0.88	-10	16	2
	Gartmore European	Medium	-1%	0.66	-23	11	0
	Gartmore European Focus	Medium	+6%	0.75	18	2	
	Gartmore European Sel Opps	Medium	+1%	0.87	-17	12	0
	HSBC Eurotrack 100	High	+1%	0.89	-20	10	0
	HSBC Splst European	High	+3%	0.88	-15	10	0
	Halifax IFM European	Medium	+2%	0.73	11	0	
	Henderson Euro Cap Gth	Medium	+2%	0.87	-15	11	0
	Inscape Europe	Medium	+3%	0.81	13	0	
	Insight Euro Discretionary	Low	+3%	0.72	13	0	
	Insight European	Medium	+1%	0.75	-16	15	0
	Insight Pan Euro Sel Opps	Low	+1%	0.82	10	1	
	Invesco Perp Euro Growth	Medium	-2%	0.87	-23	11	-1
	Invesco Perp European Equity	Medium	+5%	0.84	-13	14	1
	Investec European	Low	+1%	0.80	11	1	
Buy	JPMF European Growth	Medium	+2%	0.89	-7	13	2
	JPMF New Europe	Low	+19%	0.36	44	7	6
	Jupiter European	Low	+5%	0.79	1	16	2
	L & G (A & L) European	Medium	-2%	0.85	-24	7	0
	L & G Euro Index	High	+1%	0.91	-19	10	0
	L & G European	Medium	-3%	0.92	-25	9	-1
	Lazard European Growth	Medium	+3%	0.90	-8	13	0
	Lincoln European	Medium	+1%	0.82	-15	15	1
	M & G European	High	+1%	0.90	-21	13	-1
	M & G European Index Tracker	High	+0%	0.89	-19	11	0
	MFS Continental European	Low	+3%	0.71	17	0	
	MSDW Europe (exUK)	Medium	-1%	0.82	6	-1	
	Martin Currie European	Very High	+4%	0.85	-19	10	-1
	Merrill Continental Euro	High	+0%	0.74	14	1	
	Merrill European Dynamic	Very High	+2%	0.81	20	5	
	Morley European Focus	Low	+1%	0.74	12	0	
	Morley SF European Growth	Medium	+2%	0.93	14	1	
	New Star European Portfolio	Low	+5%	0.70	15	2	

Current Advice	Investment Fund	Risk Rating	Superiority Rating	Market Correlation	36 mth	12 mth	3 mth
	New Star European Leaders	Medium	+2%	0.92	13	1	
	New Star European Growth	Very Low	+5%	0.48	24	2	
	Newton Continental European	Medium	+1%	0.90	-12	13	-1
	Newton Pan-European	Medium	-1%	0.89	-15	10	-0
	Old Mutual European Equity	Medium	-0%	0.88	10	1	
	Premier European Growth	Medium	+5%	0.83	1	19	4
	Prudential European	High	+0%	0.90	-20	11	-1
	Prudential Euro Index	Medium	-0%	0.83	-15	17	7
	Royal London European Gth	Medium	+2%	0.85	-16	10	-1
	Ruffer European	Medium	+5%	0.40	29	8	
	S & W European	High	+3%	0.91	-18	10	0
Buy	SG European	High	+14%	0.32	9	44	0
	SVM Continental European	Low	+2%	0.70	17	3	
	SWIP European	Very Low	+2%	0.49	12	-1	
	SWIP Pan Euro Equity	Very Low	+0%	0.45	9	-1	
	Schroder European	Medium	+5%	0.88	-6	14	0
	Scot Life European	Medium	+1%	0.85	-16	10	-1
	Scot Mutual European	High	+1%	0.87	-22	11	0
	Scot Wid. Euro Select Gth	Very Low	+2%	0.50	13	-1	
	Scot Wid. Euroland	Medium	+0%	0.86	-20	13	-1
	Scot Wid. European Growth	Low	+1%	0.80	-10	13	0
	Sing & Fried European Growth	Medium	+2%	0.74	18	2	
	Sovereign European Gth	High	+1%	0.89	-20	10	0
	St James's Gtr Euro Prog.	Medium	+3%	0.83	-9	7	1
	Stan Life Euro Equity Gth	Medium	+1%	0.80	-13	10	0
	TU European	Medium	+0%	0.78	9	0	
	Threadneedle Euro Growth	Medium	+4%	0.84	-11	12	1
	Threadneedle Euro Sel Growth	Medium	+4%	0.85	-13	10	0
	Threadneedle Pan Euro Gth	Medium	+1%	0.89	-17	6	-0
	Tilney European Growth	Medium	+3%	0.88	-13	17	1

United Kingdom based Listed Investment Trusts

Current Advice	Investment Fund	Risk Rating	Superiority Rating	Market Correlation	36 mth	12 mth	3 mth
Buy	Artemis Alpha	Very High	+17%	0.40	44	16	
Buy	Baring Emerging Europe	Medium	+19%	0.30	64	13	10
	Blue Planet Gth & Inc	Very Low	-3%	0.05	-11	11	22
	Charter Pan European	High	+4%	0.85	-13	14	0
Buy	Eastern European	Medium	+27%	0.33	85	28	15
Buy	European Assets	Very High	+9%	0.56	7	33	11
	F & C European	Very High	+2%	0.85	-24	12	1
	Gartmore European	Medium	+0%	0.75	-23	15	3
Buy	Gartmore Irish Small	Medium	+31%	0.36	122	48	11
	Henderson Eurotrust	High	+3%	0.40	27	14	
Buy	Invesco Perp European	Very High	+10%	0.76	23	6	
	JPMF Cont. Euro.	Very High	+1%	0.72	14	2	
Buy	JPMF Russia	Medium	+21%	0.08	-11	10	
Buy	Jupiter European Opps	Medium	+14%	0.47	27	10	
Buy	Martin Currie European	Very High	+10%	0.79	-9	25	3
Buy	SR Europe	Medium	+7%	0.39	7	16	13

UNITED KINGDOM BASED INVESTMENT TRUSTS - SPLIT CAPITAL

Current Advice	Investment Fund	Risk Rating	Superiority Rating	Market Correlation	36 mth	12 mth	3 mth
Avoid	Morley Absolute Growth	Very High	-23%	0.25	-25	-29	

EUROPE SMALLER COS

UNITED KINGDOM BASED UNIT TRUSTS

Current Advice	Investment Fund	Risk Rating	Superiority Rating	Market Correlation	36 mth	12 mth	3 mth
Buy	BG Euro Small Coys	High	+7%	0.67	-6	21	5
Buy	DWS European Smaller Cos	High	+7%	0.76	-4	20	6
Buy	Henderson European Small Cos	Medium	+10%	0.73	10	28	4
Buy	Insight European Small Cap	Low	+7%	0.39	22	4	
	Invesco Perp Euro Smaller Cos	Medium	+4%	0.74	-3	26	7
Buy	JPMF European Smaller Coys	Medium	+12%	0.76	24	30	7
Buy	Jupiter Euro Spec Sits	Low	+8%	0.81	6	25	2
Buy	M & G European Smaller Coys	Medium	+9%	0.80	9	20	2
	SWIP Pan-European Smaller Companies	High	+2%	0.52	17	7	
Buy	Schroder Euro Small Coys	Medium	+9%	0.77	-0	26	3
Buy	Threadneedle Euro Small Cos	Low	+16%	0.73	34	29	4

UNITED KINGDOM BASED LISTED INVESTMENT TRUSTS

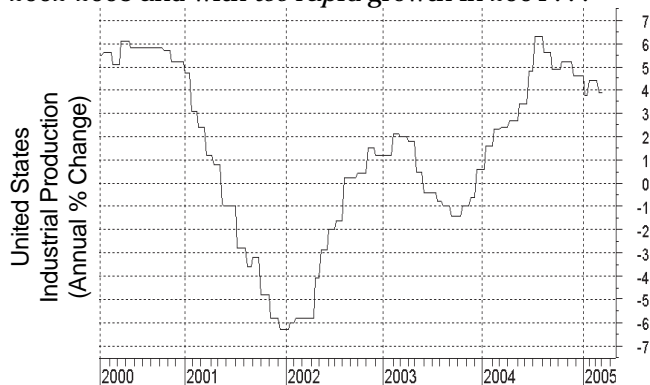
Current Advice	Investment Fund	Risk Rating	Superiority Rating	Market Correlation	36 mth	12 mth	3 mth
Buy	F & C Smaller Companies	Medium	+10%	0.54	7	25	7
Buy	Fidelity Euro V.	Medium	+14%	0.62	20	27	7
Buy	JPMF Euro Fledgling	High	+17%	0.57	37	49	18
Buy	TR European	High	+16%	0.69	36	44	10

Stockmarket Outlook *(Continued from Page 2)*

Economic indicators are a little Bearish. Gross Domestic Product has recovered strongly from the downturn in 2001 and is now running *ahead* of its sustainable growth rate . . .



Industrial Production growth shows a similar trend - with a sharp economic downturn in 2001, recovering in 2002-2003 and with *too rapid* growth in 2004 . . .

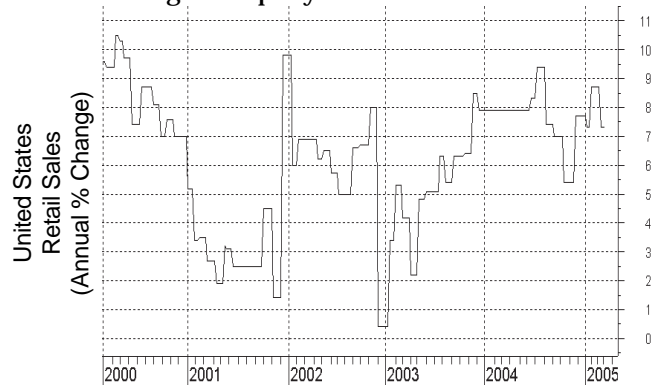


. . . so the US economy may ease back to a slower growth rate during 2005.

Low unemployment was an important indicator of constraints on growth during the 1990's boom, but unemployment grew rapidly during 2001 and slightly in 2002 and 2003. The drop in unemployment over the last 12-18 months indicates an improvement in economic activity but there are no signs of a labour shortage that would restrict further growth . . .



Retail Sales growth remains a concern as the US consumer continues to over-spend (and therefore to under-save - which will put further long term pressure on the US dollar). Retail sales slowed in 2001 but have continued to grow rapidly . . .



. . . so consumer spending is perhaps "too buoyant" and a slowdown could have a negative impact upon the stockmarket at some stage in the future.

Summary and Recommendation

We live in a world of "high" oil prices and a weak US dollar, but that will not cause share prices to decline. Overall the US stockmarket offers fair value and is slowly trending upwards. Interest rates are rising as would be expected with the upturn in economic activity over the last couple of years. Economic activity has recovered perhaps a little *too quickly* - and growth may slow in the near term - but there are no major concerns at this stage.

Other world economies and stockmarkets tell a similar story - although are generally more favourable and offer better investment value.

While there are a few clouds on the horizon, world stockmarkets are likely to trend slowly upwards over the next several years. Therefore, investors should remain fully invested in a diversified portfolio of international equities - although we would under-weight that portfolio in US shares and over-weight in Asian equities.

Next Issue

The next issue of *International Investor* will be posted in four weeks time on Tuesday May 10, 2005 (and delivered in most areas on Wednesday 11).

Subscribers who have updated their account online with an e-mail address will also receive the Electronic version in their e-mail Tuesday morning.